

ASSA Locker Hasp

Locker Hasp



391 350



390 785



390 684

Application

ASSA locker hasps 391 350, 390 785 and 390 684 for material thickness up to 16 mm. Large selection of 3 mm thick catches.

Function

In locked position the padlock stops the catch from turning. When the padlock is removed the catch can be turned 90° and the locker can be opened. Right hand turning as standard and left hand is available on request. For the best function ASSA recommend padlocks with shackle thickness between 5 and 7 mm and minimum shackle opening of 19 mm.

Accessories

Turn 391 039 can be delivered together with locker hasp with pivoting arm (390 785). The composite turn protects the pivoting arm and creates a more user friendly turn.

391 350

Chrome plated zinc. Satin chrome plated zinc on request.

390 785

Zinc plated steel. With pivoting arm.

390 684

Zinc plated steel.



Turn 391 039

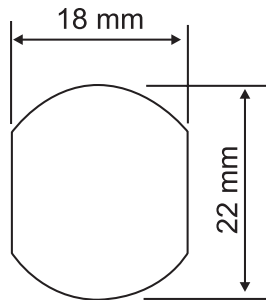
ASSA[®]
ASSA ABLOY

ASSA ABLOY, the global leader
in door opening solutions.

ASSA Locker Hasp

Locker Hasp

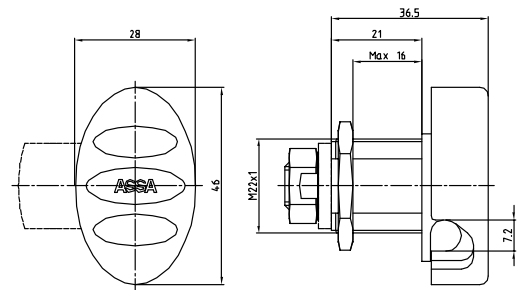
Hole preparation



Included in part no: 391350/391351 000 011

Part	Part no.	Material
Housing	391292 000 011	Zink
Core	391349 000 011	Zink
Large nut	490610 900 057	Steel
Small nut	491439 900 057	Steel
Locking washer	490246 900 057	Steel

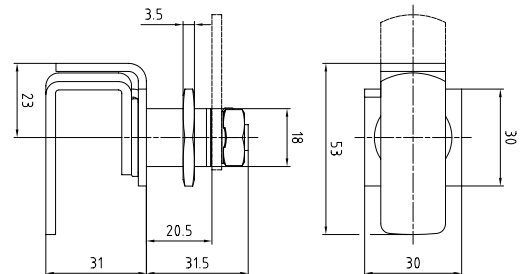
Finish
 Chrome plated
 Chrome plated
 Zink plated
 Zink plated
 Zink plated



Included in part no: 390785/390786 000 057

Part	Part no.	Material
Housing	491480 000 057	Steel
Core	491395 000 057	Steel
Large nut	490610 900 057	Steel
Small nut	491439 900 057	Steel
Locking washer	490246 900 057	Steel

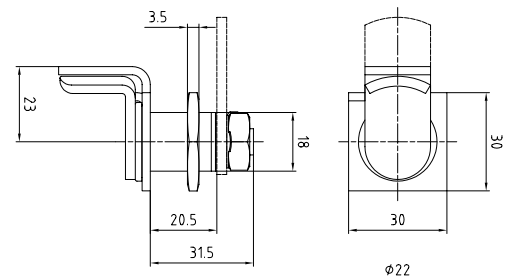
Finish
 Zink plated
 Zink plated
 Zink plated
 Zink plated
 Zink plated



Included in part no: 390684/390688 000 057

Part	Part no.	Material
Housing	491480 000 057	Steel
Core	491288 000 057	Steel
Large nut	490610 900 057	Steel
Small nut	491439 900 057	Steel
Locking washer	490246 900 057	Steel

Finish
 Zink plated
 Zink plated
 Zink plated
 Zink plated
 Zink plated



ASSA®

ASSA ABLOY

ASSA ABLOY, the global leader in door opening solutions, dedicated to satisfying end-user needs for security, safety and convenience.

ASSA OEM AB
 P.O. Box 371
 SE-631 05 Eskilstuna
 Sweden

phone +46 (0)16 17 70 00
 fax +46 (0)16 17 74 51

Customer support:
 phone +46 (0)16 17 79 50
 fax +46 (0)16 17 70 18
 e-mail: csg@assaoem.se

www.assa.se

Notes

Catches, see data sheet "Catches"

Spare parts, see data sheet "Spare parts"