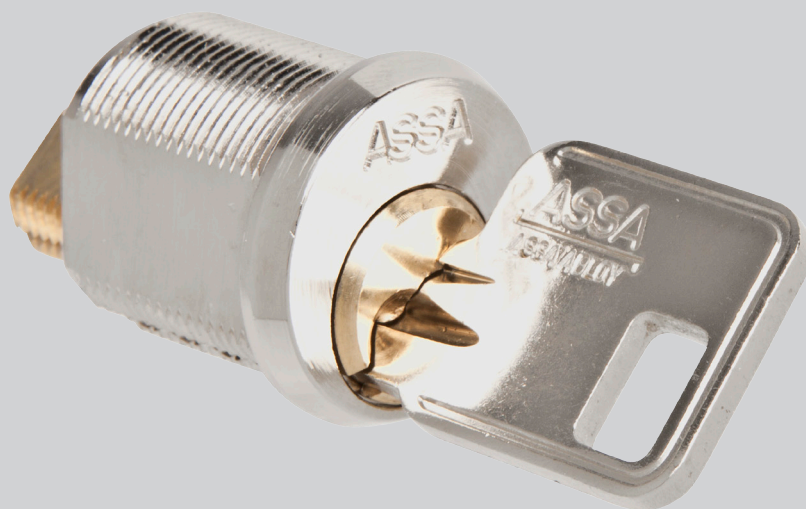


# ASSA 17450

Cam Lock



#### Performance

5-pin cylinder lock for material thickness up to 16 mm. Cylinders and keys of nickel plated brass. Large selection of 3 mm thick catches.

#### Function

The key turns  $\pm 45^\circ$  and can be removed when the catch is in both locked and unlocked position.

**ASSA**<sup>®</sup>  
ASSA ABLOY

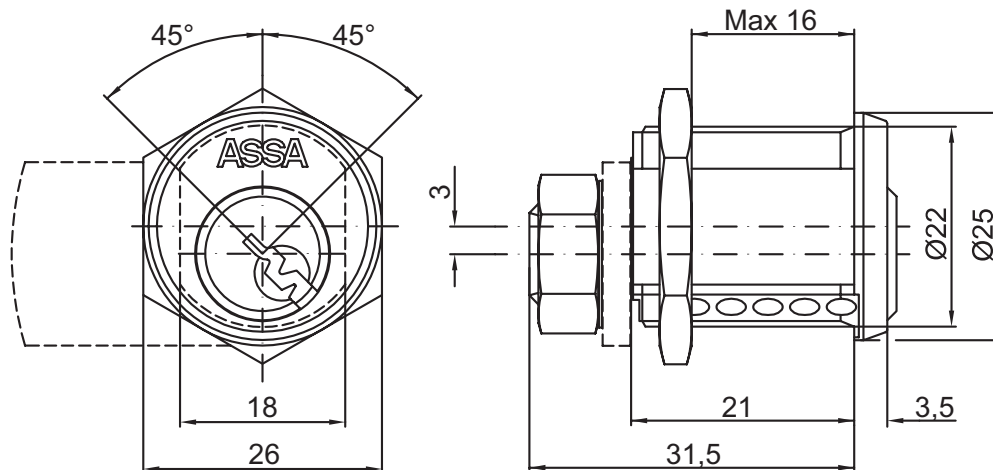
ASSA ABLOY, the global leader  
in door opening solutions.

NORMAL  
SECURITY

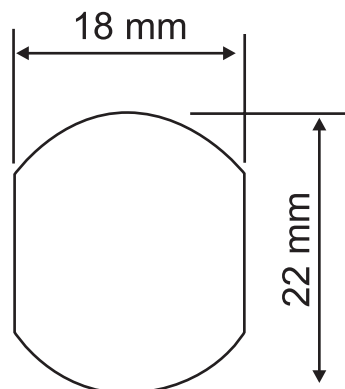
# ASSA 17450

## Cam Lock

Dimension (mm)



Hole preparation



**ASSA**®

**ASSA ABLOY**

ASSA ABLOY, the global leader in door opening solutions, dedicated to satisfying end-user needs for security, safety and convenience.

ASSA OEM AB  
P.O. Box 371  
SE-631 05 Eskilstuna  
Sweden

phone +46 (0)16 17 70 00  
fax +46 (0)16 17 74 51

Customer support:  
phone +46 (0)16 17 79 50  
fax +46 (0)16 17 70 18  
e-mail: [csg@assaoem.se](mailto:csg@assaoem.se)

[www.assa.se](http://www.assa.se)

Included in part no: 492218 000 002

Part	Part no.	Material	Finish
Keys (2 pieces)	491155 000 002	Brass	Nickel plated
Large nut	490610 000 057	Steel	Zinc plated
Small nut	491439 000 057	Steel	Zinc plated
Stop washer	492070 000 002	Brass	Nickel plated
Locking washer	490246 000 057	Steel	Zinc plated

### Notes

Cylinder house: Nickel plated brass

Cylinder: Brass

Catches with mounting holes rotated 45° should be used.

Accessories see data sheet "Accessories"

Catches see data sheet "Catches"

Spare parts see data sheet "Spare Parts"